



NATIONAL ENVIRONMENTAL
RESEARCH INSTITUTE
AARHUS UNIVERSITY

METIER FINAL CONFERENCE
ANJA SKJOLDBORG HANSEN, NERI
ash@dmu.dk

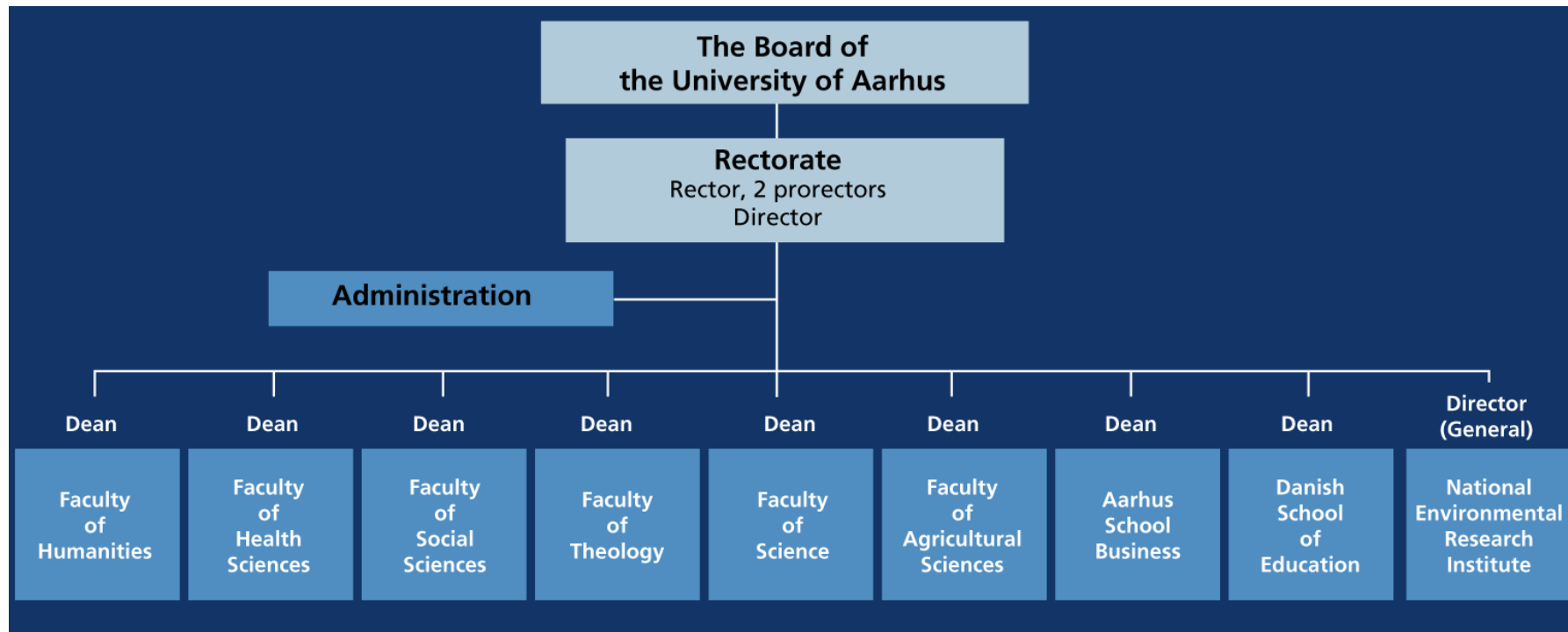
04. NOVEMBER 2009

NERI – National Environmental Research Institute



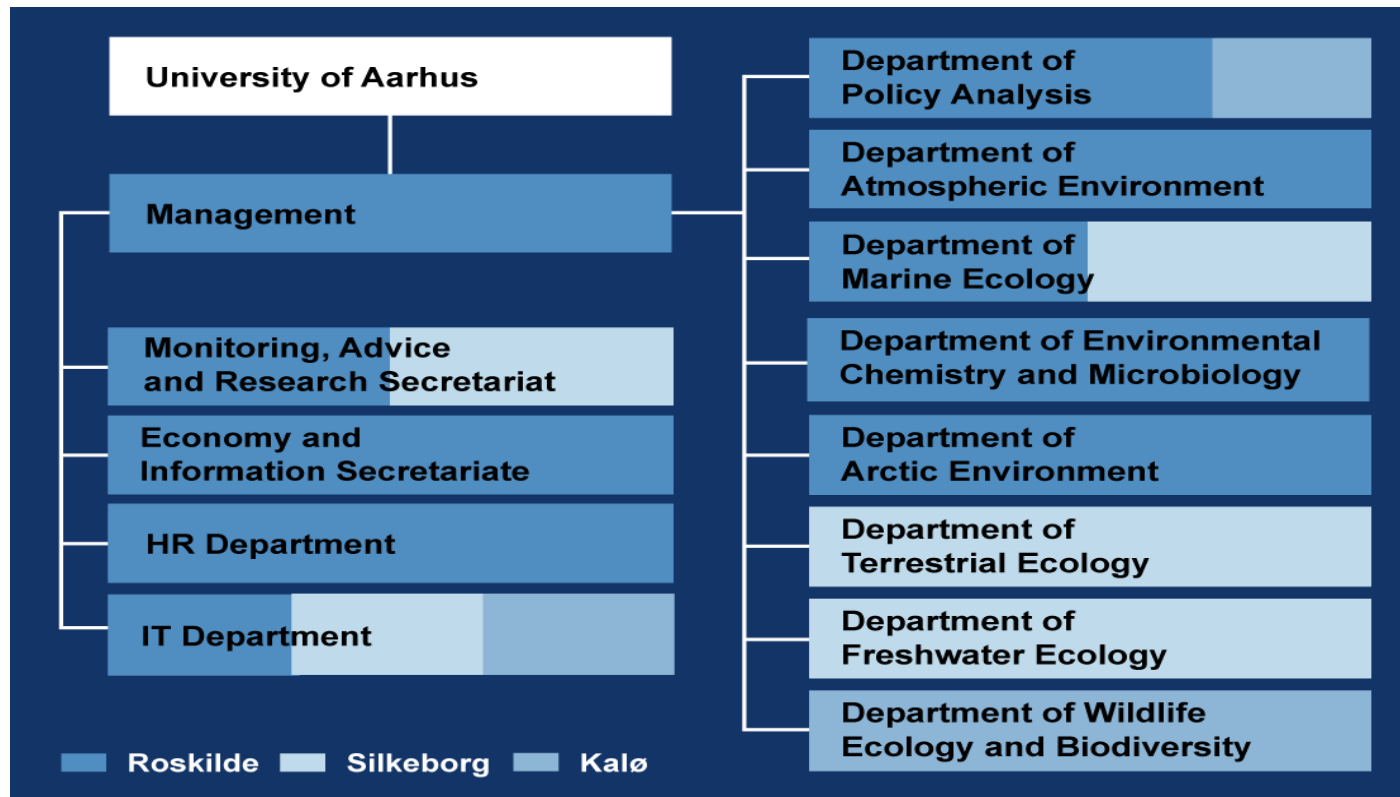


University of Aarhus – organisation



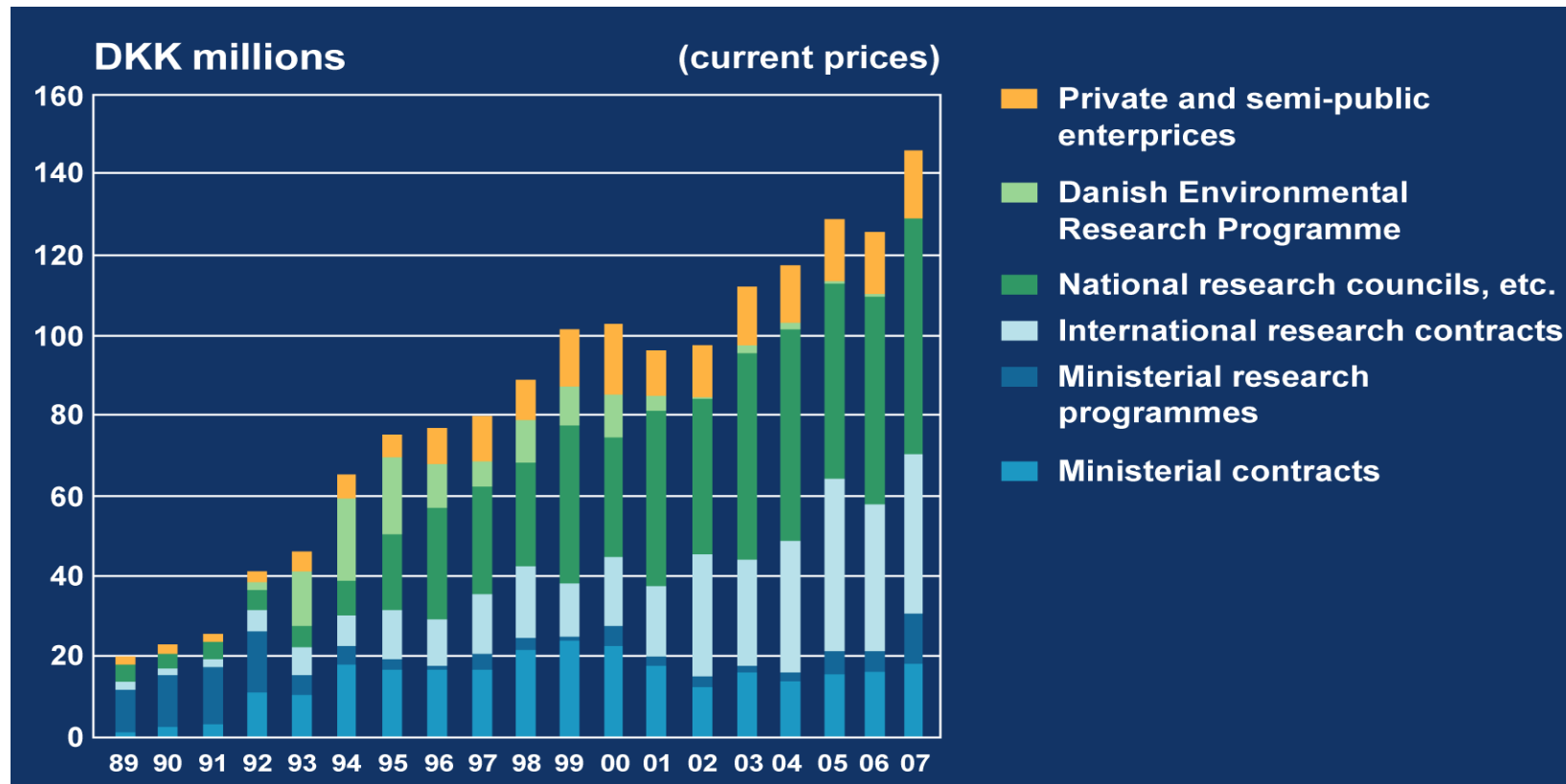


NERI organisation





Development in NERI's income from programme and contract research



NERI research profile in PEER

	ALTE RRA	CEH	CEMA GREF	JRC- IES	NERI	SYKE	UFZ
Climate Change	Dark Blue	Blue	Light Blue	Dark Blue	Blue	Dark Blue	Blue
Atmosphere	Light Blue	Dark Blue	White	Dark Blue	Dark Blue	Light Blue	White
Marine	White	White	Light Blue	Light Blue	Dark Blue	Light Blue	White
Water	Blue	Dark Blue	Blue	Light Blue	Dark Blue	Blue	Dark Blue
Soils, Forests, Agriculture	Dark Blue	Blue	Blue	Blue	Blue	Blue	Blue
Biodiversity and Land Use	Dark Blue	Blue	Blue	Light Blue	Blue	Blue	Dark Blue
Fragile Environments	Light Blue	Dark Blue	Light Blue	Blue	Dark Blue	Dark Blue	Blue
Natural Hazards and Env.Risks	Light Blue	Dark Blue	Light Blue	Blue	Blue	Blue	Dark Blue
Society	Blue	Light Blue	Light Blue	Light Blue	Blue	Dark Blue	Dark Blue
Geoinformation	Blue	Dark Blue	White	Dark Blue	Blue	Dark Blue	Blue
Environmental Technologies	White	Blue	Blue	Light Blue	Light Blue	Dark Blue	Dark Blue

Employees 2008

	<i>Staff</i>	<i>Openings</i>
Scientific careers at Danish Universities	08	08
Positions below the level of assistant professor	45	15
Ph.D. fellow/research assistant (limited positions, 1-4 yr)		
Positions at the level of assistant professor	33	7*
Researcher/post.doc. (limited positions, 1-4 yr)		
Positions at the level of associate professor	116	9
Senior researcher (permanent position)		
Professor	10	2
Other academic staff	83	
Management	13	
Technical and administrative staff	171	
Total	471	



Recruitment

- › Job openings announced on www.neri.dk
- › Often in need for qualified candidates
- › International environment:
 - › English as a working language
 - › 10-20 % of newly filled scientific positions non-Danish citizens.
 - › International center at Aarhus University
 - › International collaboration and facilities (e.g. Greenland, China)
 - › Special researcher tax apply. After tax app. 2900 €/mth. minimum



Recruitment post.doc./researcher

- › Fixed term 1-4 years., permanent position offered after 4 years as researcher.
- › Positions < 2 yrs may be filled without notification: Use your network and apply for funding in collaboration with NERI scientists.
- › Ph.D. required
- › Mostly research position, some science based advice, little or no teaching
- › Expected to apply for funding
- › Merit for previous post.doc. position



NERI research profile

Subject areas for the 15 most cited publications 2002-08
Environmental Sciences
Microbiology
Marine & Freshwater Biology
Ecology
Engineering, Environmental
Biotechnology & Applied Microbiology
Oceanography
Multidisciplinary Sciences
Chemistry, Multidisciplinary
Meteorology & Atmospheric Sciences
Limnology



Impact of international scientific publications

