

A close-up photograph of water being poured from a metal tap into a clear glass. The water is captured in motion, creating a dynamic, splashing effect. The background is a blurred, natural setting with green foliage.

Finnish Environment Institute  
- SYKE -

Careers in interdisciplinary  
research

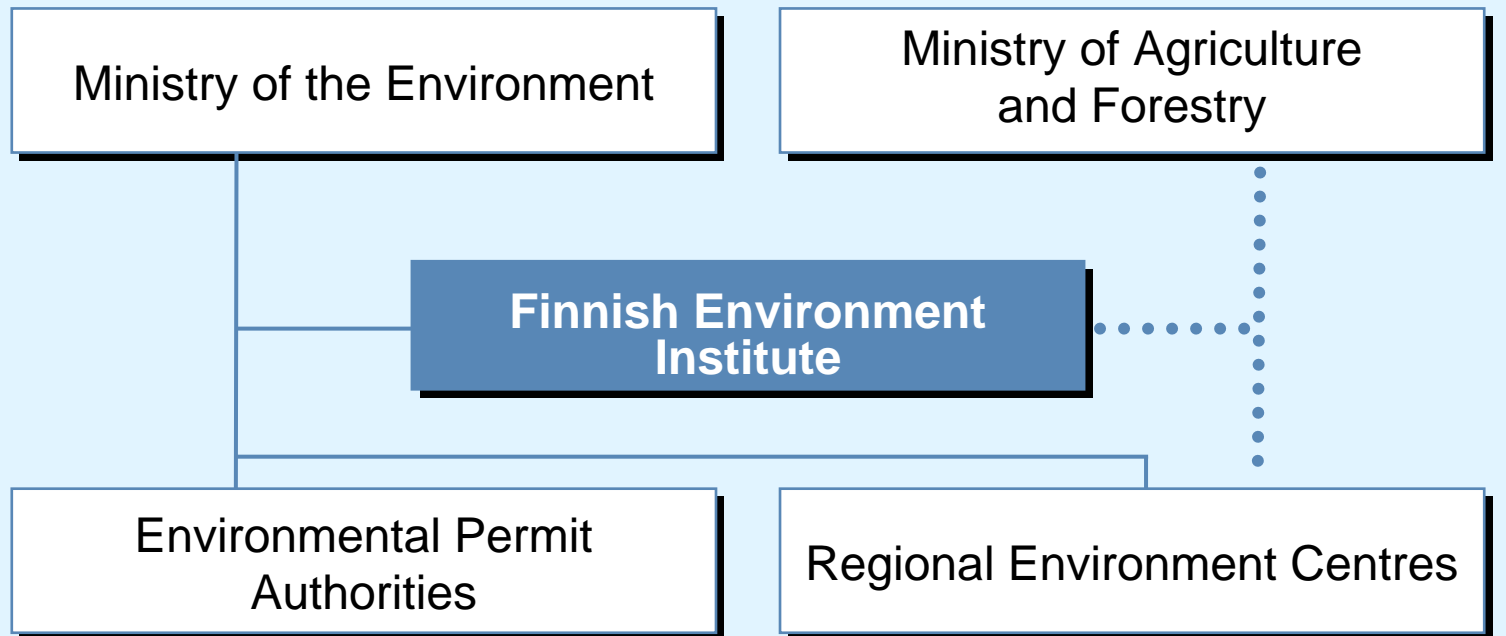
Juha Kämäri

METIER Final Conference  
4 November 2009

# The Finnish Environment Institute (SYKE) – Finland's national environmental research and development centre

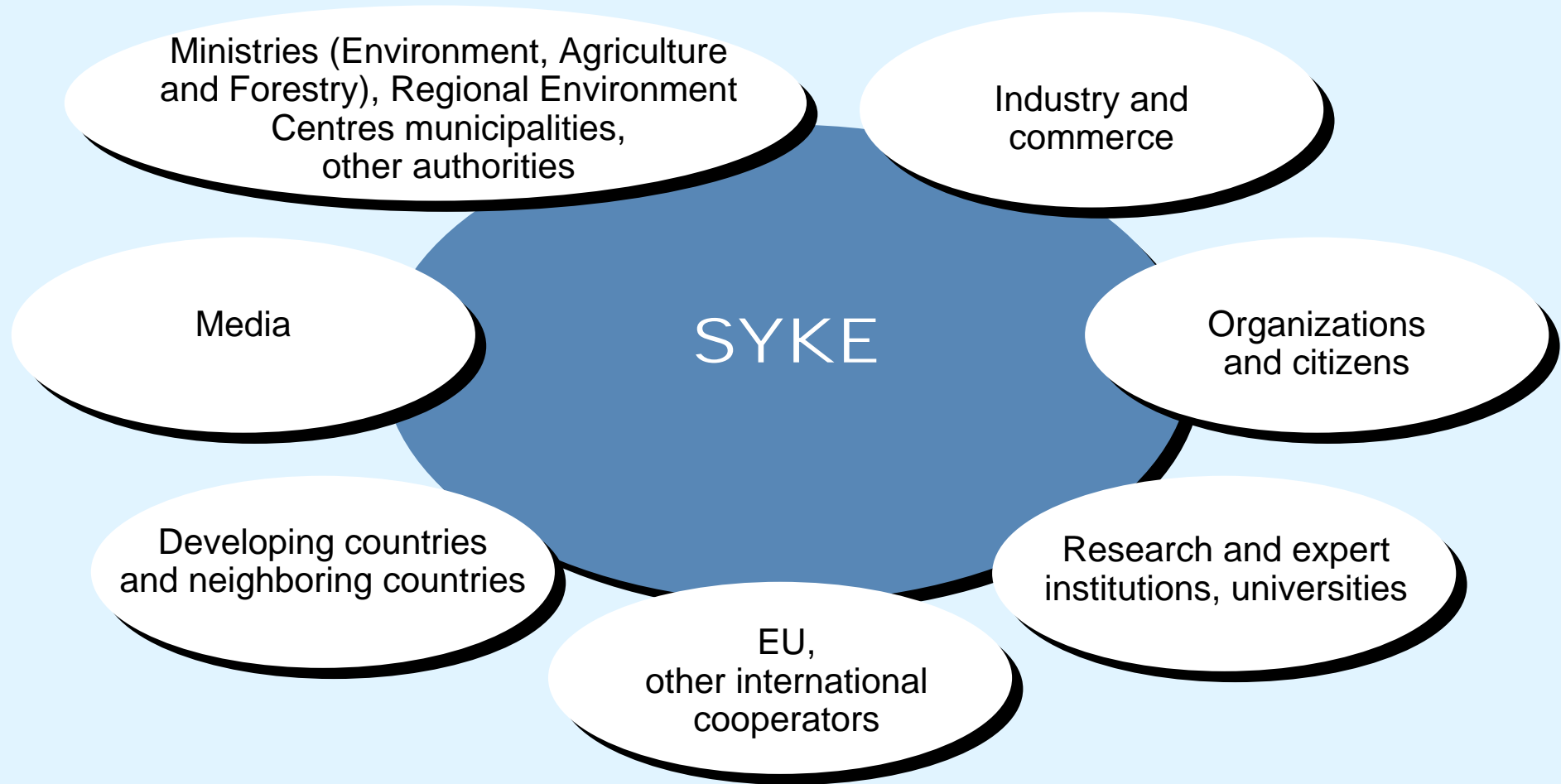
- **Functions under the Ministry of the Environment and the Ministry of Agriculture and Forestry**
- **Established on 1st March 1995**
- **Approx. 650 employees (incl. 440 with university-level education)**
- **We integrate expertise from a wide range of disciplines**
- **We produce information and solutions promoting ecologically sustainable development**

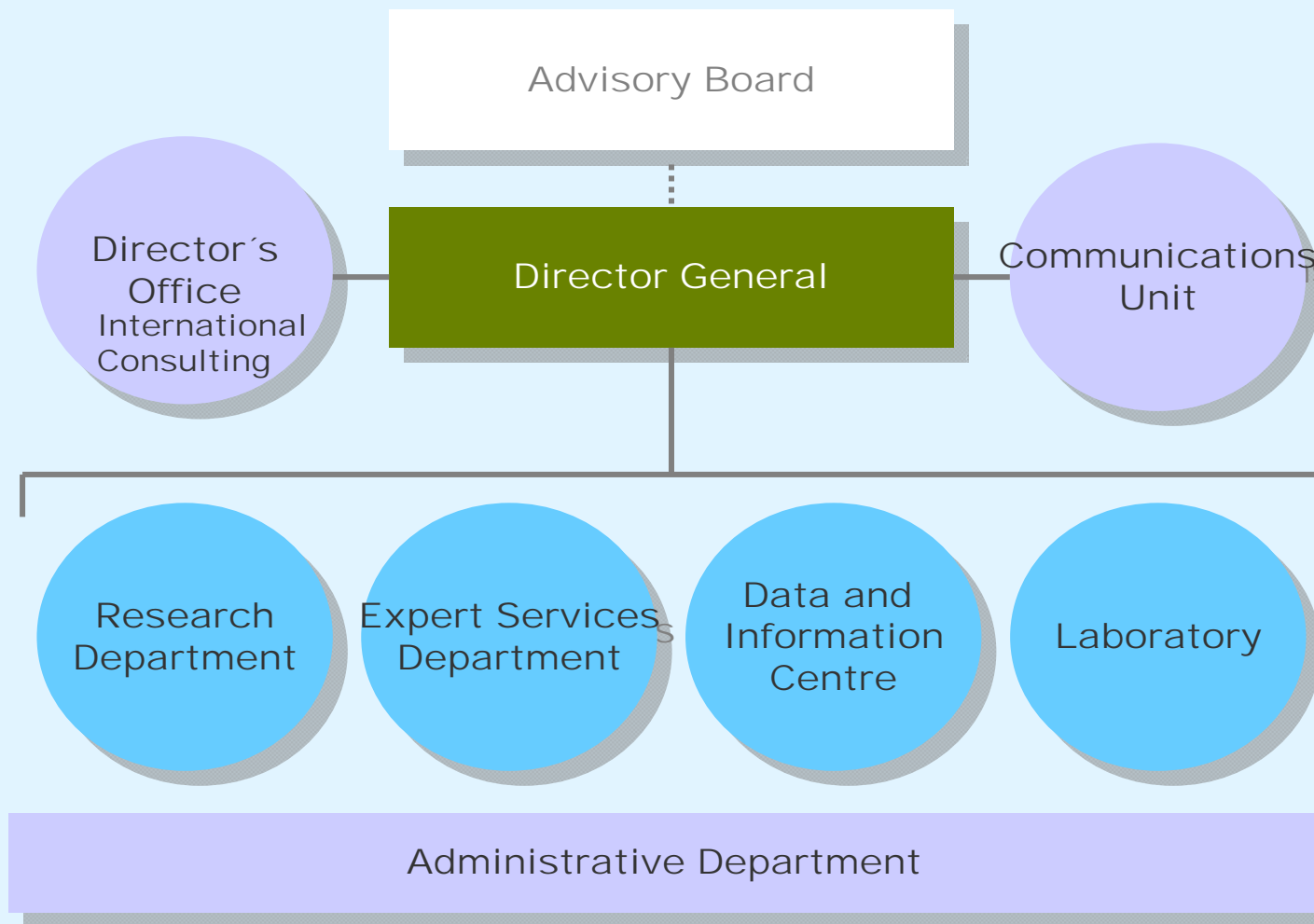
# SYKE in the Finnish Environmental Administration



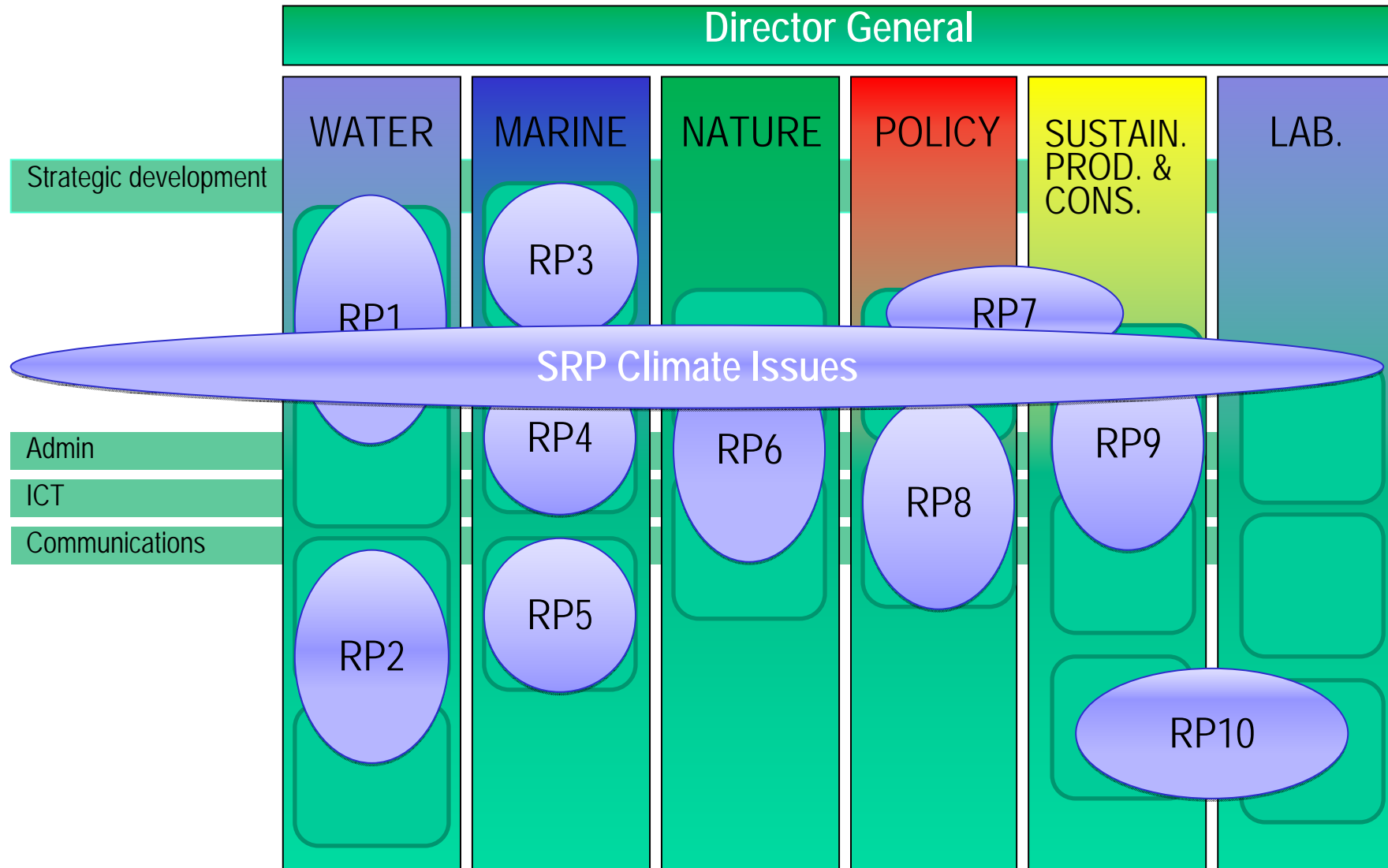
- overall supervision
- supervision of use and management of water resources

# Customers





# SYKE's organisation as of 1.1.2010



# Research Programmes at SYKE

- **SRP – Strategic Research Programme for Climate Issues**
- **RP1 – Research Programme for Water Management and Restoration**
- **RP2 – Research Programme for the Evolution of Inland Waters**
- **RP3 - Research Programme for the State of the Marine Environment**
- **RP4 - Research Programme for Marine Ecosystems**
- **RP5 - Research Programme for Marine Ecology and Biodiversity**
- **RP6 - Research Programme for Biodiversity and Ecosystem Processes**
- **RP7 - Research Programme for the Constructed Environment**
- **RP8 - Research Programme for Environmental Policy**
- **RP9 - Research Programme for Life Cycle Analysis and Integrated Emission Control**
- **RP10 - Research Programme for Contaminants and Risks**

# Personnel by category in SYKE

<b>Personnel groupings</b>	<b>2006</b>	<b>2007</b>	<b>2008</b>
Academic degree in natural sciences	261	269	271
Master of science in engineering	115	110	106
Other academic degrees	55	57	54
Laboratory and research assistants	44	57	41
Office personnel	96	93	90
Other personnel	31	37	29
<b>Total, persons</b>	<b>602</b>	<b>623</b>	<b>591</b>

# Skills and Competences Preferred

- **Applicable education**
- **Multidisciplinary expertise**
- **Good methodological skills**
- **Project experience**
- **International experience**

## Priority topics in the future

- **Energy and eco-efficiency**
- **Constructed environment**
- **Ecosystem services**
- **Environmental policy**
- **Automization of monitoring and sampling**
- **Modelling and remote sensing**