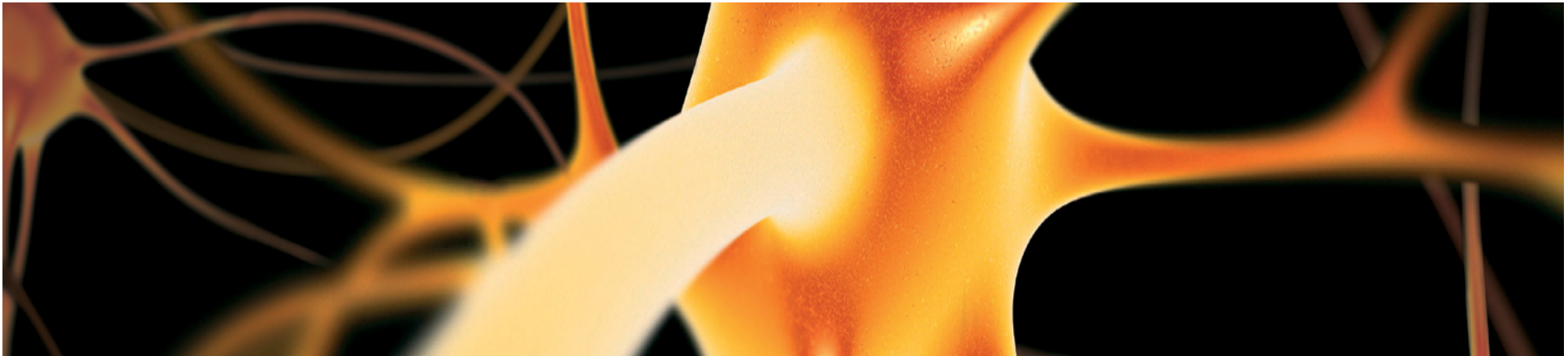


## FP7 PEOPLE Specific Programme

### *Marie Curie Actions*



**David Pina**  
Research Programme Officer  
Research Executive Agency

[David.Pina@ec.europa.eu](mailto:David.Pina@ec.europa.eu)

[David.Pina@ec.europa.eu](mailto:David.Pina@ec.europa.eu)



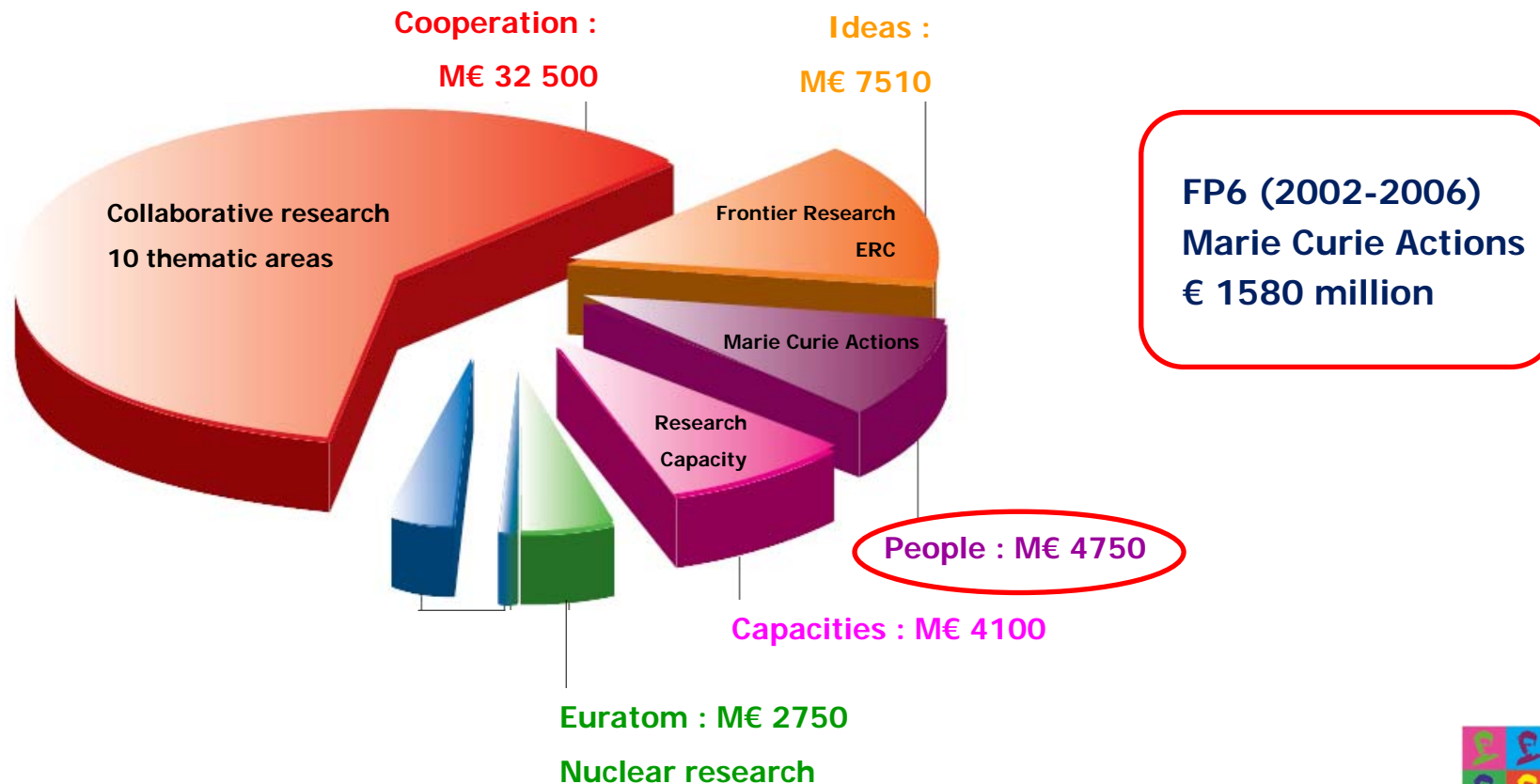
1. FP7 in general and the Marie Curie Actions in particular
2. Opportunities for researchers: *Individual fellowships*
3. Preparation and submission of proposals
4. Host-driven actions: *funding for institutions*

## EU's main instrument for funding research

Aim : Contribute to the Union becoming the world's leading research area

Total EC budget : M€ 50 500

FP7 breakdown (€ million)



## People programme = Marie Curie Actions

From pure mobility actions to a dedicated programme for structuring training, mobility and career development

### Objectives:

- ✓ Human resources potential in R&D in Europe
- ✓ Stimulate people to enter into the profession of researcher
- ✓ Encouraging researchers to stay in Europe
- ✓ Attracting researchers from around the world

### Eligible researchers for funding

**Early-stage researchers (ESR)** : *research experience  $\leq$  4 years or No PhD*

**Experienced researchers (ER)** : *research experience  $\geq$  4 years or PhD holder*

2 pay scales (less and more than 10 years experience)

One main condition to be eligible: *Mobility*

A diagram where the word 'Mobility' is written in orange. Two orange arrows originate from the right side of 'Mobility', pointing to the words 'Geographical' and 'Sectorial', which are also written in orange.

Definition of *Mobility*

Researchers not living/working in country of the host for more than 12 months in the last 36 months before relevant deadline

What do we offer ?


- ✓ Employment contracts with full social rights
- ✓ Addressed to researchers at all stages of their careers
- ✓ Adequate working conditions and attractive salaries
- ✓ Peer-reviewed international evaluation
- ✓ European (and international) prestige

## Main characteristics:

- ✓ Open to all domains of research (bottom-up approach)
- ✓ Application through calls for proposals
- ✓ Evaluation by international peer-reviewers
- ✓ Trans-national and inter-sector mobility
- ✓ Budget covers mainly salaries of researchers

## Two main types of actions depending on the type of applicants:

- ✓ Principal Investigators (PI) – *Host-driven actions*
- ✓ Individual researchers – *Individual fellowships*

A central graphic shows a person's head and shoulders in profile, facing right, against a solid blue square background. The person is rendered in a dark blue silhouette. Three thought bubbles are connected to the person's head by thin lines. The top bubble is a cloud shape and contains the text "Can I apply?". The middle bubble is an oval shape and contains the text "I am finishing my PhD and looking for a post-doc position". The bottom bubble is an oval shape and contains the text "I have more than 4 years of research experience". To the right of the person's head, there is a list of criteria for "Experienced researcher" in orange text, followed by "PhD holder" and "OR" in blue text, and "> 4 years experience" in blue italicized text. Below the person's head, the text "You have 2 options !" is written in blue italicized font.

**Can I apply?**

**I am finishing my PhD and looking for a post-doc position**

**I have more than 4 years of research experience**

**Experienced researcher :**  
**PhD holder**  
**OR**  
**> 4 years experience**

**You have 2 options !**



The screenshot shows a Windows Internet Explorer browser window displaying the Marie Curie Actions website. The browser's address bar shows the URL <http://ec.europa.eu/research/mariecurieactions/index.htm>. The website header features the European Commission logo and the text "RESEARCH". Below the header, the main content area is divided into several sections:

- Welcome to the Marie Curie Actions**: A central banner with the Marie Curie logo.
- Career Opportunities for Researchers**: A green box with the tagline "anytime - anyplace - anywhere".
- Careers**: A large section with a circular image of two people working. It includes a red circle around the text "Job vacancies", and links for "Publish a job vacancy" and "Taking control of your career".
- Funding**: A section with a circular image of three people and a list of questions:
  - **WHAT** are the Marie Curie Actions
  - **WHICH** actions are suited for me
  - **HOW** to apply
  - **WHEN** to apply
  - **WHERE** is my application
  - **HOW TO** manage my project
  - **WHY?** find your answers in the FAQs
- Are you Marie Curious?**: A red circular button with the text "Consider a research career".
- Policies**: A section with a circular image of a person working and the following text:
  - EURAXESS - Researchers in motion
  - European policies for researchers
  - The European Charter 4 Researchers and the Code of Conduct 4 their Recruitment
  - Europe 4 Researchers Newsletter

The browser's taskbar at the bottom shows the Start button, several open applications (Inbox - Microsoft Outlook, Marie Curie Actions, Microsoft PowerPoint), and the system tray with the date and time (10:24).



# European Commission EURAXESS



European Commission > Euraxess > Jobs > Research Job Vacancies

## FP6 and FP7 vacancies

Research Job Vacancies ?

Marie Curie Vacancies

Look for the "Experienced researcher" positions



**Publish your job vacancies / Post your CV**

### New user

- Researchers sign-up
- Organisations sign-up
- FAQ
- List of registered organisations

### Login

User Account  
  
 Password  
   
 Forgot your password?

Refine by Country... Organisation... Research field...

136 Job vacancies found (1-20 displayed)

Page 1 of 7 Go to page:

**Post-Doctoral Position in CFD**  
 The work concerns developments in meshless method (Smooth Particle Hydrodynamics SPH). In the framework of multiphase CFD, the work concerns the adaptation of SPH parallel algorithms for the unsteady free-surface [...]  
**Country:** France | **Organisation:** Centrale Lyon Innovation | **Research field:** Physics | **Post date:** 31/07/2008 21:11

**Post-Doctoral Position in CFD**  
 The work concerns developments in meshless method (Smooth Particle Hydrodynamics SPH). In the framework of multiphase CFD, the objectives of the work are the adaptation of SPH parallel algorithms to Graphical [...]  
**Country:** Switzerland | **Organisation:** Centrale Lyon Innovation | **Research field:** Physics | **Post date:** 31/07/2008 20:55

**Experienced researcher / Post Doc in nanoparticle dispersions**  
 You will work in a well-known applied research facility in the area of nanoparticles. Your work will be focused on the



You can apply yourself for a Marie Curie individual fellowship!



**Individual-driven actions:**  
Applicants are **individual researchers**  
in liaison with potential supervisor/host institution

**5 different Actions:**

- ✓ Intra-European Fellowships for Career Development (IEF)
- ✓ International Outgoing Fellowships for Career Development (IOF)
- ✓ International Incoming Fellowships (IIF)
  
- ✓ European Reintegration Grants (ERG)
- ✓ International Reintegration Grants (IRG)

## Intra-European Fellowships for career development (IEF)

**To support the career development of experienced researchers at different stages of their careers**

- 12 to 24 months (full-time) period
- Any nationals working/living in MS/AS moving to another MS/AS
- Mobility requirement at the deadline of the call (definition)

## International Outgoing Fellowships for career development (IOF)

**To reinforce the international dimension of the career of European researchers**

- 12-24 months period in a TC plus 12 months of compulsory return phase in MS/AC
- For Nationals of MS/AC

## International Incoming Fellowships (IIF)

**To reinforce the scientific excellence of MS/AS with incoming to Europe top-class researchers from TC**

- 12-24 months period in MS/AC
- Any nationals coming from outside Europe
- Possible return phase to country of origin (12 months): 15 000 Euro

## European Reintegration Grants (ERG)

*After a Marie Curie fellowship of at least 18 months duration*

- Financial contribution of *15 000 €/year during 2-3 years*
- Host institution within MS/AS, including country of origin
- Research costs, including salary of researchers or assistants

## International Reintegration Grants (IRG)

For *MS/AC nationals* working in research in a third country for at least 3 years *and returning to a MS/AC*

- Financial contribution of *25 000 €/year during 3-4 years*
- Host institution within MS/AS, including country of origin
- Research costs, including salary of researchers or assistants

Action	Eligible proposals	Funded Proposals	Success rate
EIF	9094	1600	17.6 %
IOF	1401	302	21.6 %
IIF	2158	380	17.6 %
ERG	509	439	86.2 %
IRG	513	436	85.0 %

## Success rates

Action	Total FP6	2007	2008
EIF	17.6 %	24.9 %	26.6 %
IOF	21.6 %	29.3 %	24.9 %
IIF	17.6 %	22.9 %	21.2 %
ERG	86.2 %	86.3 %	88.9 %
IRG	85.0 %	57.3 %	52.2 %

- ✓ Living allowance\*: according to the experience of the fellow
- ✓ Mobility allowance\*: € 500 or 800 per month
- ✓ Travel allowance: € 250 to 2500 per year
- ✓ Career exploratory allowance : € 2000 per recruitment > 1 year (only for IEF)
  
- ✓ Research/training/networking costs : € 500 or 800 per researcher-month
- ✓ Management costs and Overheads : € 700 per researcher-month (up to 20%)

## 2010 Call Calendar

Action	Budget (M€)	Call Open	Deadline
RG (ERG & IRG)	32	9 Oct 2009	9 Mar 2010 7 Sep 2010
IEF	95		
IOF	28	17 Mar 2010	17 Aug 2010
IIF	28		

## Marie Curie Intra-European fellowship

- ✓ Read the **Guide for Applicants**
- ✓ Check carefully the **eligibility** criteria
- ✓ Search for a **host institution** and **scientific supervisor**
- ✓ Bare in mind the **time schedule** for the preparation of the proposal
- ✓ **Contact** former Marie Curie fellows



**Part A** : Administrative information: forms completed online

**Part B** : Details of the proposed research project (pdf uploaded)

**Researcher**  
Weighting: 25%  
Max. 8 pages

**Training**  
Weighting: 15%  
Max. 2 pages

**S&T Quality**  
Weighting: 25%  
Max. 7 pages

**Impact**  
Weighting: 20%  
Max. 2 pages

**Implementation**  
Weighting: 15%  
Max. 6 pages

**+ Ethics**  
(if applicable)

**Timing** : Several months for preparation, 2-3 months for evaluation,  
2-3 months for negotiation

**Evaluation process** : 3 independent experts (peer-review)

**Researcher**  
**Weighting: 25%**  
**Threshold: 4/5**

- ✓ **Research experience/ scientific CV**
- ✓ **Results: publications, patents, studies, conferences**
- ✓ **Independent thinking/leadership**
- ✓ **Potential: professional maturity and new knowledge**
- ✓ **Profile match between the fellow and the project**

**S&T Quality**  
**Weighting: 25%**  
**Threshold: 3/5**

- ✓ **Research project objectives and relevance**
- ✓ **Methodological approach: Inter/Multidisciplinarity**
- ✓ **State-of-the-art: Originality, Excellence and Innovative aspects**
- ✓ **Experience of the host and supervisor**

**Implementation**  
**Weighting: 15%**  
**No Threshold**

- ✓ Infrastructure, facilities, international collaborations
- ✓ Management of the project, dissemination and IPR
- ✓ Work plan: feasibility and credibility
- ✓ Practical support by the host

**Training**  
**Weighting: 15%**  
**Threshold: 3/5**

- ✓ Training objectives and quality
- ✓ Complementary skills: project management, presentation skills, IPR
- ✓ Host expertise in training, supervision

**Impact**  
**Weighting: 20%**  
**No Threshold**

- ✓ Fellow potential for reaching independence
- ✓ Impact on career development: short and long term
- ✓ Benefit of the mobility towards the ERA
- ✓ European excellence/competitiveness (Lisbon strategy objectives)

## Main mistakes/weak points

- Fellow's skills to carry out the project are not convincing
- Referee's assessment is not positive for the applicant
- Publication record is low, no peer reviewed journals
- Poor explanation and justification of the state-of-the-art
- Project is too ambitious (time frame of the project!)
- Training objectives are unclear in relation to the capacities of the researcher
- Practical arrangements for the fellow are not mentioned



European Commission > CORDIS > FP7

Home News Funding Results Themes Go local Look it up Interact Help



### Seventh Framework Programme (FP7)

Search all CORDIS Search

About | What's New? | Sitemap

>> Quick Links

- FP7 Home
- FP7 newsroom
- Understand FP7
- Participate in FP7
- Find a call
- Register your organisation
- Preparation and Submission of Proposals (EPSS)
- Get support
- Find project partners
- Find a project
- Find a document

→ Practical Guide to EU Funding

**In the spotlight**  
■ View the new EU RTDI mind map online for funding opportunities

→ Register as independent experts for FP7: Evaluation, monitoring and other assistance

→ View the lists of experts that participated in the evaluation of proposals received in response to calls

	<b>Cooperation</b>		<b>Ideas</b>
	<b>People</b>		<b>Capacities</b>
<b>Euratom</b>		<b>JRC</b>	

**What type of user are you?**  
The Seventh Framework Programme (FP7) is designed to support a wide range of participants... [read more](#)

- Private company
- Public organisation
- Individual researchers
- Outside the EU

**Latest News**  
['Women in science' book and audio book now available](#)  
[Date: 2009-10-19]

The European Commission's Directorate-General for Research has published a book about 'Women in science'. Available online and as an audio book, the publication tells the fascinating stories of outstanding female scientists, such as Marie Curie-Sklodowska and Hildegard Von Bingen, and their achievements. 'For much of human history, women were officially excluded from the scientific realm,' ... [read more](#)



>> [more news](#)

**Forthcoming Events**

- [Training course on preparing and submitting FP7 proposals](#) Malta  
[Event Date: 2009-11-05]
- [Policy meeting on 'Human rights in conflicts: the role of civil society'](#) Brussels, Belgium  
[Event Date: 2009-11-10]

>> [more events](#)

**Highlights**

- New [Ethics Help Desk](#) for all FP7 projects that need advice or assistance
- The European Commission published [53 Calls for Proposals](#) in various thematic areas of the Seventh Framework Programme (FP7) on 30 July 2009.
- On 23 June 2009, Commission has adopted [acceptability criteria for average personnel cost methodologies](#) in FP7.
- On 15 June 2009, Commission decided to maintain the FP7 transitional flat rate for indirect costs at 60%
- FORCE is a new on-line tool to edit and submit Forms C for both FP-6 and FP-7. It is now

- FP7 Home
- FP7 newsroom
- Understand FP7
- Participate in FP7
- **Find a call**
- Register your organisation
- Preparation and Submission of Proposals (EPSS)
- Get support
- Find project partners
- Find a project
- Find a document

Find a call

FP7 Calls Cooperation Ideas **People** Capacities Euratom

Open Calls / Closed Calls / Forthcoming Calls Cofunded Calls

PEOPLE / 3 Open calls

Call Identifier	Call Title	Publication Date	Cut-off-dates	Deadline
FP7-PEOPLE-2010-RG	Marie Curie Reintegration Grants	2009-10-09	2010-03-09	2010-09-07
FP7-PEOPLE-2010-NIGHT	Researchers' night	2009-10-13		2010-01-13
FP7-PEOPLE-2010-ITN	Marie Curie Initial Training Networks (ITN)	2009-09-08		2009-12-22

**E-mail Notification**

Use CORDIS e-mail notification service to be notified by e-mail each time a call relevant to your area of expertise is published.

RSS | What is RSS?



## Seventh Framework Programme (FP7)

Search all CORDIS

[About](#) | [What's New?](#) | [Sitemap](#)

>> [Quick Links](#)

- FP7 Home
- FP7 newsroom
- Understand FP7
- Participate in FP7
- **Find a call**
- Register your organisation
- Preparation and Submission of Proposals (EPSS)
- Get support
- Find project partners
- Find a project
- Find a document

### People: Call for Proposal

- FP7 Calls**
- Cooperation
- Ideas
- People
- Capacities
- Euratom

## PEOPLE Calls: FP7-PEOPLE-2010-RG

[Information Package](#) | [Electronic Proposal Submission Service \(EPSS\)](#)  
[Additional Documents](#) | [Get Support](#) | [Build Your Consortium](#)

### Marie Curie Reintegration Grants

**EPSS is now available for this call for proposals**

**Identifier:** FP7-PEOPLE-2010-RG

**Publication Date:** 09 October 2009

**Budget:** € 32 000 000

**Deadline:** 07 September 2010 at 17:00:00 (Brussels local time)

**Cut-Off dates:**

09 March 2010 at 17:00:00 (Brussels local time) - 1st cut-off date

**OJ Reference:** OJ C242 of 09 October 2009

**Specific Programme(s):** People

**Theme:** PEOPLE

**Restrictions to Participation:** See eligibility criteria in the work programme

**Information Package** Key documents required for the preparation of your proposal.

**Electronic Proposal Submission Service (EPSS)** Instructions on the submission of your proposal through the EPSS

**Additional Documents** Useful documents on the call and on FP7 in general.

### Get Support

- View and print relevant National Contact Points.
- To ensure compliance with **ethical issues**, further information is available on [http://cordis.europa.eu/fp7/ethics\\_en.html](http://cordis.europa.eu/fp7/ethics_en.html)
- [http://cordis.europa.eu/fp7/people/home\\_en.html](http://cordis.europa.eu/fp7/people/home_en.html)



**Information Package**  Key documents required for the preparation of your proposal.

In order to receive a complete Information Package for this call, you will need to select the following elements:

1. The call fiche (only available in .pdf format)
2. The work programme (.pdf format)
3. FP7 factsheets in your preferred language - an overview of the basic features of this programme (.pdf format)
4. The Guides for Applicants relevant to the funding schemes used in this call (.pdf format)

All files have been treated uniformly and compressed to facilitate the access to the individual documents and to optimise the speed of transfer. To access the files, you will need a [file compression utility](#) capable of opening the '.zip' format.

[select all](#) | [clear all](#)

- |  |               |
|--|---------------|
| <input type="checkbox"/> <b>Call Fiche</b>   | English   PDF |
| <input type="checkbox"/> <b>Work Programme 2010 - People</b>   | English   PDF |
| <input checked="" type="checkbox"/> <b>Guide for Applicants (International Reintegration Grants - IRG)</b> | English   PDF |
| <input checked="" type="checkbox"/> <b>Guide for Applicants (European Reintegration Grants - ERG)</b>      | English   PDF |
| <input type="checkbox"/> <b>FP7 factsheets</b>   | English   PDF |

Documents can be downloaded or sent to you by email.

|

**Accessing the Files Available on this Page:**

Please note that during peak hours (10:00 - 17:00 C.E.T.) the download time might be slow and we therefore encourage users to try again at another time.

**Electronic Proposal Submission Service (EPSS)** Instructions on the submission of your proposal through the EPSS

**Additional Documents** Useful documents on the call and on FP7 in general.

Download |  | E-mail

#### Accessing the Files Available on this Page:

Please note that during peak hours (10:00 - 17:00 C.E.T.) the download time might be slow and we therefore encourage users to try again at another time.

#### Electronic Proposal Submission Service (EPSS) Instructions on the submission of your proposal through the EPSS

Please select the funding scheme, or sub-funding scheme, corresponding to the work programme topic you are addressing, from the list below. You will then be linked to the correct EPSS entry point.

#### Additional Documents Useful documents on the call and on FP7 in general.

#### Get Support

- View and print relevant [National Contact Points](#).
- To ensure compliance with **ethical issues**, further information is available on [http://cordis.europa.eu/fp7/ethics\\_en.html](http://cordis.europa.eu/fp7/ethics_en.html)
- [http://cordis.europa.eu/fp7/people/home\\_en.html](http://cordis.europa.eu/fp7/people/home_en.html)

#### Build Your Consortium

- View potential partners for this activity area.

#### E-mail Notification

Use [CORDIS e-mail notification service](#) to be notified by e-mail each time a call relevant to your area of expertise is published.

[RSS](#) | [What is RSS?](#)

## Electronic Proposal Submission Service (EPSS)



EPSS

The EPSS web application is best viewed with  
- Internet Explorer 6.0 (and above)  
- or Mozilla Firefox 1.0 (and above)

### Important notice

Attention!

Due to maintenance work the Electronic Proposal Submission Service (EPSS) will be effectively not available between 08.00 and 20:00 on Tuesday 10/11/2009 Brussels local time. We apologize for the inconvenience caused.

The EPSS service ([support@epss-fp7.org](mailto:support@epss-fp7.org) - +32 2 233 37 60)

### Welcome to EPSS, the Electronic Proposal Submission Service

Call Selected: **FP7-PEOPLE-2010-RG**  
Sub-Scheme Selected: **MC-IRG**

- I am the **coordinator** of a proposal and I need a user name and a password → [REGISTER<sup>1</sup>](#)
- I already have an **online** user name and a password → [LOGIN](#)
- I am a **participant (not the coordinator)** in a proposal and I need a user name and password → [CONTACT YOUR COORDINATOR](#)

[EPSS user guide](#)

[Privacy Statement](#)

<sup>1</sup>Usernames and passwords are sent by e-mail. The Commission takes no responsibility for any potential loss, incorrect arrival, non-delivery or use of the username and password. **It is the co-ordinator's responsibility to ensure that he/she has sufficient time to prepare and submit the proposal using EPSS after the receipt of the username and password.** The proposer takes the risk and responsibility to ensure that the e-mail address provided is correct and assumes all risks in case of error, misuse, illegibility or loss of confidentiality or security. If you experience any difficulty receiving your user name and password, please contact the EPSS operator by e-mail [support@epss-fp7.org](mailto:support@epss-fp7.org) or by phone +32-2-233 3760.

*I am a PI, group leader, science programme manager*

Can I apply for Marie Curie funding?



**Host-driven actions :**

Submission of proposals is a **Principal Investigators, Group leaders, Scientists-in-charge, programme manager** initiative, on behalf of **institutions**

- ✓ **Industry-Academia Partnerships and Pathways (IAPP)**
- ✓ **Initial training Networks (ITN)**
- ✓ **International Research Staff Exchange Scheme (IRSES)**
- ✓ **Co-funding of reg., national and intern. Programmes (COFUND)**

## Objectives :

1. **Foster co-operation** between non-commercial research organisations & commercial enterprises based on joint research projects
2. **Stimulate long-term collaboration** between sectors through secondment of researchers between the public & private research domains
3. **Diverse career possibilities & research experience** for researchers, knowledge sharing/cultural exchange

## Participant rules:

- ✓ At least ONE **non-commercial organisation**
- ✓ At least ONE **commercial enterprises**
  
- ✓ **Minimum 1 from each sector from MS/AC**
- ✓ **Additional participants from anywhere in world**
  
- **EU Member States (MS)**
  
- **Associated Countries (AC):**  
*Switzerland, Israel, Norway, Iceland, Liechtenstein, Turkey, Croatia, FYROM, Serbia, Albania and Montenegro*
  
- **International Cooperation Partner Countries (ICPC):**  
*based on three categories according to income per capita (low-income, lower-middle-income, or upper-middle-income)*
  
- **Other Third Countries (OTC)**

## Main activities:

### Compulsory Secondment of staff

- ✓ Majority of support in IAPP
- ✓ Always inter-sector
- ✓ Normally 2-way with in-built return
- ✓ Up to 30% for secondments within same country
- ✓ Early-stage/Experienced researchers (2-24 months)

### Optional Recruitment of experienced researchers

- ✓ Not substitute for secondment
- ✓ Only for Experienced researchers (12-24 months)

## Community Contribution:

- ✓ Salaries of secondees and recruited researchers
- ✓ Research and networking costs
- ✓ Organization of training events open to external researchers

## Aims to improve career perspectives of early stage researchers in both public & private sector

### Structuring the Initial Training of Researchers at EU level :

- ✓ International Networks of Participants
- ✓ Mutual recognition of Training/Degrees
- ✓ Opening training events to external researchers
- ✓ Complementary skills: entrepreneurship, management, IPR, grant writing, communication

### Participant rules:

- ✓ Generally at least 3 participants: Universities, research centres, companies, SMEs
- ✓ Typically located in at least 3 different MS/AC
- ✓ Involvement of private sector

## Eligible researchers: *Nationals from any country*

- ✓ *ESR: early-stage researchers* (funding: 3-36 months)
- ✓ ER: experienced researchers (funding: max 24 months)
- ✓ Visiting scientists (experienced researchers) : for short stays

## Community Contribution:

- ✓ Salaries of recruited researchers/visiting scientists
- ✓ Research and networking costs
- ✓ Organization of training events open to external researchers

## Aiming at strengthening research partnerships between Europe and the rest of the world

### Participant rules:

- ✓ At least 2 independent research organisations in two different MS/AS
- ✓ One or more organisations in "TC"(\*)
- ✓ Additional partners **from any sector** and **from any other country** welcome
- ✓ Joint multi-annual programmes of 24-48 months

### Eligible researchers:

- ✓ Research staff mainly, but also technical and management staff
- ✓ Staff is seconded (not recruited): Min. 1 month - max. 12 months/researcher

### Community contribution:

- ✓ Balanced exchange of EU/International researchers
- ✓ Subsistence/travel allowance for **outgoing European researchers € 1900/month/researcher**
- ✓ Case by case: subsistence/travel allowance incoming ICPC/ENP

(\*) countries with which the Community has an S&T agreement or are in the process of negotiations, or in countries covered by the European Neighbourhood Policy (ENP).

David.Pina@ec.europa.eu

**Aims at increasing the European-wide mobility possibilities for training and career development of experienced researchers**

**Participant rules:** *Organisations funding and managing a fellowship programme*

- ✓ Official public bodies (ministries, academies, councils, agencies, etc)
- ✓ Other public/private bodies (large research organisations, charities, etc)
- ✓ Bodies at international level, running such schemes at European level

**Eligible researchers:**

- ✓ Experienced researchers
- ✓ Three types of trans-national mobility:

Outgoing : to another MS/AS/TC

Incoming : from another MS/AS/TC

Re-integration : from TC to home MS/AS (after a research stay of at least 3 years)

**Community contribution:**

- ✓ 40% of the fellowship costs for eligible researchers (max. 5 M€ per participant)

**Marie Curie website:**

<http://ec.europa.eu/research/mariecurieactions>

**FP7 CORDIS People website:**

[http://cordis.europa.eu/fp7/people/home\\_en.html](http://cordis.europa.eu/fp7/people/home_en.html)

**Helpdesk:**

<http://ec.europa.eu/research/enquiries>

**Register as an expert:**

<http://cordis.europa.eu/emmfp7/index.cfm>

**Thank you for your attention**

**David.Pina@ec.europa.eu**