

EUROPEAN LANDSCAPES

LABORATORIES OF REGIONAL SUSTAINABILITY

Landscapes are an expression of culture and nature Landscapes are dynamic and characteristic expressions of the interactions between society and its physical environment | **Dynamic systems** Because of the underlying social and natural processes, living landscapes are always subject to change and evolution | **Important ecological resource** Landscape is spatial interaction between ecosystems and basis for regional sustainability | **Places of economic productivity** A variety of functions e.g. agriculture, urbanisation, energy and recreation provide the basis for rural development | **Landscapes consist of recognisable units** The diversity of characteristic landscapes is one of the key assets of Europe, although much threatened in recently | **Identity to places and to people** Local identity is to a large extent determined by landscape character.



PEER AND LANDSCAPE EUROPE OFFER

- cooperation and synergy between the existing landscape initiatives across EU Member States;
- a long-term view on European research objectives and priorities;
- consistent efforts towards a wider integration of landscape science into other disciplines and sectors;
- recognisable profile within the wider research and policy world

ACTIVITIES

European project implementation

- ELCAI European Landscape Character Assessment Initiative (www.elcai.org)
- SENSOR Sustainability Impact Assessment on Multi-functional Land Use (www.sensor-ip.org)
- ENRISK Risk Assessment for European Agriculture

- ATLAS Action for Training in Land Use and Sustainability: interactive database of educational provision on landscape and sustainability (www.atlas-eu.org)
- and many others where Landscape Europe partners play a leading role

Development of European core data sets

- LANMAP2 European Landscape Typology and Map, accepted by EEA
- SRRF Spatial Regional Reference Framework (see www.sensor-ip.org)
- Landscape Indicator on Diversity as part of the EEA IRENA Framework
- Landscape Identity Assessment as part of SENSOR Module 3 (www.sensor-ip.org)

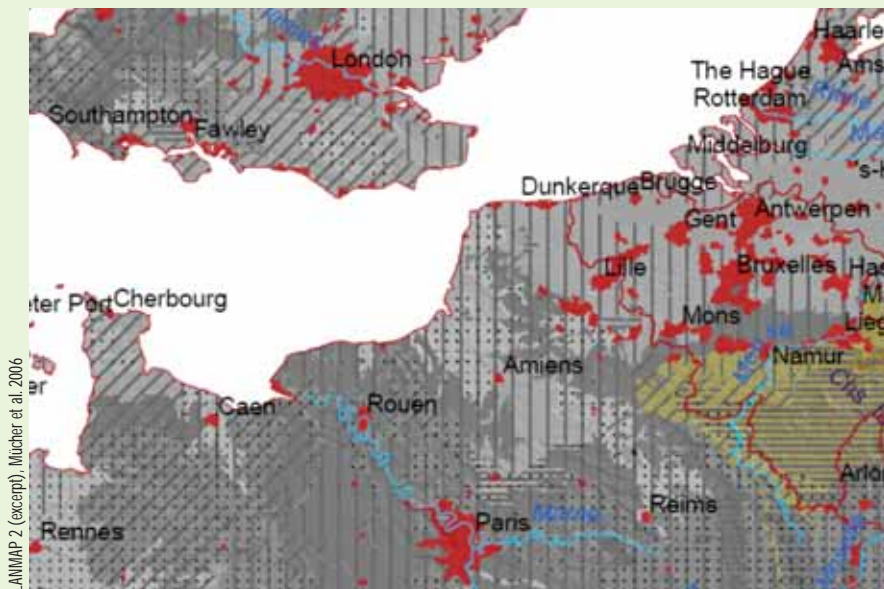
Policy support

- many advisory activities for the European Union (incl. EEA, JRC Ispra) and for the Council of Europe (especially regarding the European Landscape Convention)

Research supports EU policies in order to minimize further destabilization of the balance between social, economic and ecological landscape values in Europe.

Landscape Europe Publications (2005-2007)

- European Landscape Character Areas (Wascher, Landscape Europe, 2005)
- Sustainable Land Use in Intensively Used Agricultural Regions (Meyer, Landscape Europe, 2006)
- Special issue on Trends in European Landscape Research. (Pedroli & Pinto Correia Landscape ecology Vol. 21, Nr. 3, 2006)
- Europe's Living Landscapes, Essays exploring our identity in the countryside (knv Publishers, July 2007)



One of the key products of the recent research activities has been the development of the European landscape typology map, the so-called LANMAP2. Consisting of a ArcView shape file with about 14000 landscape mapping units, it is the first time that a digital map based on the state-of-the-art European data sets (environmental zones, topography, parent material and - CORINE - land cover) has been produced and critically examined among a wide circle of European landscape experts. The essential features of the map are 375 European landscape types sorted into the eight environmental zones. These environmental zones are largely based on climate data which direct application of climate-change models for further research.



LANDSCAPE EUROPE

CONTACT

Dirk M. Wascher, PEER Landscape planning and management coordinator - LANDSCAPE EUROPE
 Alterra - Wageningen UR, Netherlands | Tel. +31 31 7477932
landscape@peer-environment.eu | landscape.europe@wur.nl

High level PEER - Landscape Europe Conference

May 2008, Brussels | "Landscapes - fabrics for weaving a sustainable future. Towards a European landscape research and policy agenda"

www.landscape-europe.net